

Jack Buck, Debbye Turner, Elaine Viets, and Stan "The Man" Musial
Honorary Co-Chairs

Invite You To

The Compton Heights Concert Band Benefit
"Pizzazz and Jazz Pops Concert"

**Double
Bill!**

Plaza Frontenac

Saturday, May 1, 1993
8 p.m.

8:00 p.m.

The Nationally Acclaimed 70-piece Compton Heights Concert Band
Dr. Gregory Fox, Conductor

A toe-tapping Sousa-style concert with *Pizzazz!*

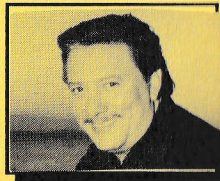
Special Guest Artist — Grammy-nominee world class trumpet soloist *Arturo Sandoval*

10:00 p.m.

East St. Louis' World Famous Lincoln High School Jazz Band
Ron Carter, Conductor

Dance to the best in Big Band and Jazz! The band will also be joined by *Arturo!*

Arturo Sandoval,
called *Jazz Trumpeter of the Decade* by
L. A. Jazz Critic Leonard Feather.



Other Attractions

Elaine Viets, Emcee — Cash Bar — Dancing — Silent Auction — FREE Indoor Parking

Ticket Prices: Ringside — \$100; Good for Admission of two persons to a Reserved Table
General Admission — \$25; Good for Admission of two persons. Reserved Table of 8 available
Corporate — \$500; Good for Admission of 8 persons in a Reserved Ringside Table,
and Name Recognition in Program



To order tickets, call and leave message at 776-2227. Credit Card orders accepted.
Doors Open at 7 p.m.

All net proceeds for benefit of the Compton Heights Concert Band

**The Association of Concert Bands
National Convention**

a
n
d

The Naperville Municipal Band

Present

*"Music in the Schools and the
Community Band—A Vital Connection"*

A One-Hour Demonstration Concert by
**The Compton Heights Concert Band
of St. Louis**

Dr. Gregory Fox, Conductor



Friday, April 16, 1993 ■ 1:00 p.m.
North Senior High School Auditorium

*St. Louis' outstanding community band, joined by selected
music students from the Naperville Junior High Schools
perform together in an exciting, Sousa-style program of
concert band classics by Percy Grainger, John Philip Sousa,
Andrew Lloyd Webber, and others.*

**"Your Adult Community Band —
A Positive Role Model for Students"**

Making the Connection: The Compton Heights Concert Band In The Schools Program

Annually, the Compton Heights Concert Band presents approximately 30 major concerts to 100,000 listeners in St. Louis and throughout Missouri. These are traditional Sousa-style band concerts presented by our regular professional and volunteer musicians. Today's special demonstration concert at the National Convention of the Association of Concert Bands represents a unique pilot program we are developing, called "The Compton Heights Concert Band In The Schools Program."

For part of today's concert, 25 Naperville area junior high school students will join with Compton Heights Concert Band members in pieces they have practiced prior to our arrival and then rehearsed earlier in the day with the band. Clinics, conducted by Compton Heights Concert Band professionals and coordinated by Band Director, Dr. Gregory Fox, precede the ensemble rehearsals. The clinics explore various issues of brass, woodwind and percussion playing and also help to prepare the students for the combined concert.

The concert and clinics are an abbreviated version of a day-long program developed for schools by the Compton Heights Concert Band. The full program includes a series of individual, sectional, group and full ensemble workshops and rehearsals led by Compton Heights Concert Band professionals and Dr. Fox. Included is a lecture/discussion entitled, "The American Concert Band—A Unique Art Form." This segment of the program explores the history and development of the concert band in America, from Patrick Gilmore and Sousa to the present, with emphasis on those aspects defining the unique art form known as the American concert band.

The day-long program concludes in a public concert with the participating students sitting and playing side by side with Compton Heights Concert Band members. Music students, parents of students, and members of the general public are encouraged to attend.

The concert adds an exclamation point to the program's goal of making a connection between school music programs and community bands. Since few students will become performing artists or make a living in music, the important point is that the investment in lessons, time and instruments that parents and students make will pay dividends later when, as adults, these students join a community band. Adults have a longing to be part of a community, and playing an instrument in a community band satisfies this need. Beyond the benefit to the individual, the benefit to the community is evident from the 100,000 listeners who annually attend Compton Heights Concert Band concerts. The strong feelings they express for the concerts and the music we play are remarkable. Each season their response is an inspiration for us to go forward.

We hope that today's demonstration concert will spur other community bands throughout the United States to develop similar school music programs. Community bands and schools will be increasingly dependent on establishing this connection, according to many observers of the music education field.

Taking this idea one step further, the Compton Heights Concert Band is also developing similar college level programs designed to offer intensive instruction, ensemble experience and performance opportunities to rural colleges which often

(Continued on centerfold, below Band Roster)

Band History

Whether it's an antique clock or a stately old house, perhaps you have felt the sense of satisfaction that comes from restoring and breathing life into some relic of a bygone day. That same preservationist philosophy is the driving force behind the Compton Heights Concert Band of St. Louis and our efforts to promote and perform the fine concert band literature of yesteryear.

The Band was organized in 1976 by Band President Harry Swanger, and numbered only 18 members at its first performance. Today the Band has grown to include some 70 volunteer, student, and professional musicians from the metropolitan St. Louis area.

Musical Mondays, the Band's eight-week summer series of old-fashioned band concerts, held annually since 1980, is held in the Henry Shaw Memorial Bandstand in Tower Grove Park, recently designated a national historic landmark. The Band's other popular series, Sunday Serenades, held at Francis Park in south St. Louis, began in 1986. They are now two of the city's favorite musical traditions, attracting over 50,000 listeners annually.

In keeping with the Sousa-style program, each concert features a different soloist. Over the years the Band has had the honor of performing with such well-known greats as William Warfield, James Christensen (director of music at Disney World in Florida), Dr. Leonard Smith, Debbye Turner (Miss America 1990), and Arturo Sandoval. In 1988 the Band hosted the national convention of the Association of Concert Bands, an occasion marked by Missouri Senate and House Resolutions. Most recently the Band has been acclaimed by audiences throughout the State of Missouri under the Missouri Arts Council Touring Program and other sponsors.

Dr. Gregory Fox was appointed Conductor of the Band in September 1992. He holds a Bachelor's degree in Music Education from the State University of New York at Fredonia, and a Master's degree and Doctorate in Music Education from the University of Illinois at Champaign-Urbana. He has been involved with bands ever since his elementary school days in Jamestown, NY. Dr. Fox has studied conducting with such notables as Harry Begian and Carl Topilow. He is also an accomplished tubist, having performed with bands and orchestras in New York, Pennsylvania, Illinois and Missouri. Dr. Fox is a founding member of the Arch Brass, and has organized and conducted the annual Merry Tuba Christmas concert at the St. Louis Galleria since 1989.

To help finance its many expenses, the Compton Heights Concert Band depends upon individual and corporate donations, concert sponsors' fees, a weekly Bingo, sales of souvenirs, and Bandwagon memberships. Support also comes from the Missouri Arts Council, The Regional Arts Commission, The Arts and Education Council, The Monsanto Fund, and the Clifford Willard Gaylord Foundation.

For more information please call the Band office at 776-2227, or write to the Compton Heights Band of St. Louis at 2335 S. Grand, St. Louis, MO 63104.

**Compton Heights Concert Band
Association of Concert Bands
National Convention**

Friday, April 16, 1993
1:00 p.m.
North High School Auditorium
Naperville, Illinois

DR. GREGORY FOX, CONDUCTOR
LUCY SCHROEDER, ANNOUNCER

TODAY'S PROGRAM

- FESTIVE OVERTURE, OP. 96 Dmitri Shostakovich
- ELSA'S PROCESSION TO THE CATHEDRAL Richard Wagner
From "Lohengrin"
- CHILDREN'S MARCH
"OVER THE HILLS AND FAR AWAY" Percy Aldridge Grainger
- EGMONT OVERTURE Ludwig von Beethoven
- WASHINGTON POST MARCH John Philip Sousa
Guest Conductor, Peter Martin
- THE GATHERING OF THE RANKS AT HEBRON David Holsinger
- * HIS HONOR MARCH Henry Fillmore
- * SELECTIONS FROM
"THE PHANTOM OF THE OPERA" arr. Warren Barker

* The Compton Heights Concert Band will be joined by students from the Naperville Junior High School Band Departments.

The Band

CONDUCTOR Dr. Gregory Fox	Lowell Fellingner William Findlay Scott Harder John Kennedy Tony Lordi Jeanmarie Mertens Connie Orear Mary Shepherd Rebecca Shiflet Robert Shiflet	TRUMPET Nancy Bender Anne Bryan Charles Duncan Lars Fox John Gacioch Margaret Garmatz Jason Harris Mark Hasenstab Jason Kling Tom Orear Joe Serber Ken Tiefenbrunn	TROMBONE Bruce Campbell B.J. Fullenkamp Carl Horn Jennifer Spatafora William Volk Rich Weber Jeff Weiss								
FLUTE Jennifer Adams Kathy Brophy Marion Castellanos Timothy Hirzel Jaci Lett Carol Marsh Christina Palermo Marilyn Siemens	BASS CLARINET Peggy Morton Dolores Ullrich	FRENCH HORN Ann Arias Allison Felter Harriet Evans Golden Janet Hauck Lorraine Sharp John Thomas	TUBA Kelley Kesterson Jon Schroeder Kenneth Torres Donald Ullrich								
OBOE Jan Parkes Elaine Powers	ALTO SAX John Grothe Stephen Walker	PERCUSSION Robin Hendry Adam Kopff Pat Stewart	STAGE CREW Stephen Walker								
BASSOON Anna Christ Harry Swanger	TENOR SAX Nancy Christen Jay Hartig	EUPHONIUM Thomas Burkey Matt McCready Greg Wieland	BAND OFFICERS President; Harry Swanger Vice President; Jon Schroeder Secretary; Stephen Walker								
CLARINET Tim Bainter Nancy Bonds Sidney Boxer Robert Brasier Luann Brown Don Cavalli Paul Coates Linda Fehlhaber	BARITONE SAX John Pierson Gary Stolz	<p align="center">BOARD OF DIRECTORS</p> <table border="0"> <tr> <td>Don Cavalli</td> <td>Jon Schroeder</td> </tr> <tr> <td>Jay Hartig</td> <td>Harry Swanger</td> </tr> <tr> <td>Adam Kopff</td> <td>Stephen Walker</td> </tr> <tr> <td>Jeanmarie Mertens</td> <td>Greg Wieland</td> </tr> </table>		Don Cavalli	Jon Schroeder	Jay Hartig	Harry Swanger	Adam Kopff	Stephen Walker	Jeanmarie Mertens	Greg Wieland
Don Cavalli	Jon Schroeder										
Jay Hartig	Harry Swanger										
Adam Kopff	Stephen Walker										
Jeanmarie Mertens	Greg Wieland										

Making The Connection: Continued from inside front cover

lack resources or access to professional instruction on each instrument and may have limited numbers of student musicians.

The Compton Heights Concert Band regularly tours in Missouri under the auspices of the Missouri Arts Council and hopes to be added soon to the roster of the Mid-America Arts Alliance, Kansas City, Missouri. Both of these agencies provide matching funds to interested parties desiring The Compton Heights Concert Band In The Schools Program and/or a Compton Heights Concert Band concert. In addition to the qualifying states of Missouri, Arkansas, Kansas, Nebraska, Oklahoma and Texas, the Compton Heights Concert Band will consider any community requesting these programs.

Anyone desiring more information on the Compton Heights Concert Band various schools programs, or wishing to bring the band to their school district or college should call Harry Swanger, Executive Director, Compton Heights Concert Band, at (314) 776-2227, or write to the band office at 2335 South Grand Blvd., St. Louis, MO 63104.

The Bandwagon

BANDWAGON IN SIXTEENTH YEAR

The BANDWAGON, the Band's citizen support organization, enters its sixteenth year of operation with the 1992-93 concert season.

Each BANDWAGON member receives a free subscription to the *SousaFun*, the Band's official newsletter and advance notice of all Band performances. BANDWAGON members also serve as an advisory board to the Band. The BANDWAGON participates in Band fundraising, including a weekly Saturday night BINGO. They also provide office help and assist in concert presentations. BANDWAGON members interested in "pitching in" should call the Band at 776-2227.

All contributions to the Compton Heights Concert Band BANDWAGON are tax-deductible. Memberships may be held jointly by husband and wife.

**Sign up today and have your name listed in the program
in time for our next concert!**

I want to join the 1992-93 Compton Heights BANDWAGON.
Enclosed is my contribution:

- \$250 & up - BANDMASTER \$25 - BAND AIDE
 \$100 - BAND DIRECTOR \$10 - SENIOR BAND AIDE
 \$50 - BAND MEMBER (65 and over)

Check Enclosed Charge to: _____
 Bill me

ACCOUNT NUMBER & NAME

EXP. DATE

SIGNATURE

Please make check payable to: COMPTON HEIGHTS BAND, INC.

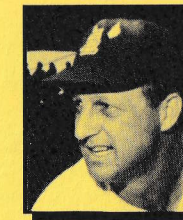
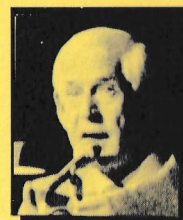
Name _____

Address _____

Telephone Home _____ Office _____

Check if renewal
of 1991-92 membership

Mail to: Compton Heights Concert Band
2335 S. Grand, St. Louis, MO 63104



Jack Buck, Debbye Turner, Elaine Viets, and Stan "The Man" Musial
Honorary Co-Chairs

Invite You To

The Compton Heights Concert Band Benefit "Pizzazz and Jazz Pops Concert"

Ticket Prices: Ringside — \$100; Good for Admission of two persons to a Reserved Table
 General Admission — \$25; Good for Admission of two persons. Reserved Table of 8 available
 Corporate — \$500; Good for Admission of 8 persons in a Reserved Ringside Table,
 and Name Recognition in Program



To order tickets, call and leave message at 776-2227. Credit Card orders accepted.
 Doors Open at 7 p.m.

All net proceeds for benefit of the Compton Heights Concert Band

ORDER FORM

Compton Heights Concert Band "Pizzazz and Jazz Pops Concert" Benefit
 Plaza Frontenac, Saturday, May 1, 1993 • 8:00 p.m.

Please send	_____ tickets @ \$100 (Each ticket admits two)	= \$ _____	Send tickets to:
	_____ tickets @ \$25 (Each ticket admits two)	= \$ _____	Name _____
	_____ Corporate Table @ \$500 (Good for admission of 8 persons at reserved Ringside Table and name recognition in program*)	= \$ _____	Address _____
	_____ Check enclosed	TOTAL = \$ _____	City, State, Zip _____
	_____ Charge to VISA/MC:		Business Phone _____
	_____ Account Number and Expiration Date		Home Phone _____
	_____ Account Name and Address		Mail Order Form to:

* Our name should appear in the concert program as follows:

Compton Heights Concert Band of St. Louis
2335 S. Grand, St. Louis, MO 63104